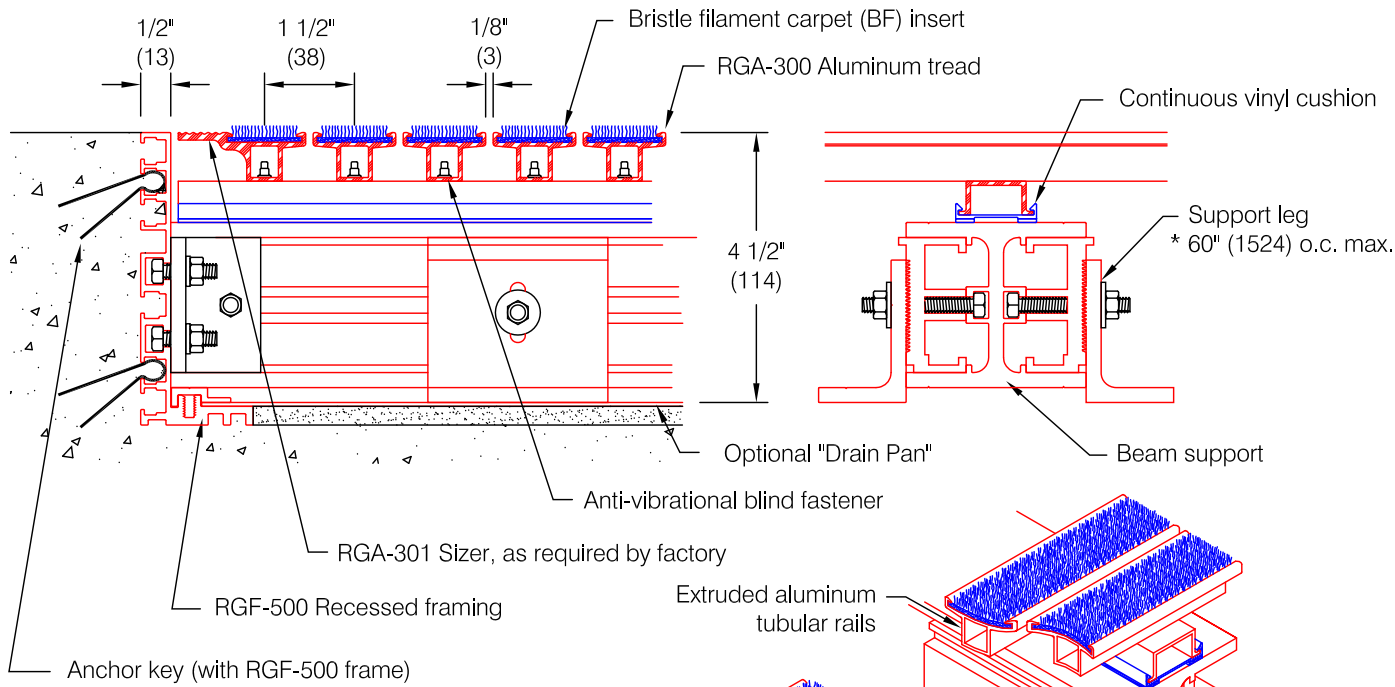




Pro • Tek[®] Entrance Mats & Gratings

Architectural Building Products Since 1945

RG-600 Drain-Well[®] Bristle Filament Carpet Insert



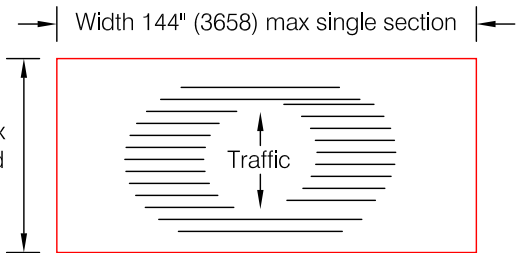
Features:

- Extruded aluminum treads and cross supports alloy 6105-T5
- Continuous dual-durometer vinyl cushion for superior noise reduction
- 4 1/2" (114) deep for increased drainage ability
- Tubular tread rails for increased strength
- Anti-vibrational fasteners for long-life service
- Single section width to 144" (3658)
- Solution dyed polypropylene fibers, 27 oz/sqyd with 50% Blend 600/12-Denier multi-filament and 595/D1 monofilament. Fibers are fusion bonded to continuous two-ply rigid backing.
- Fibers are waterproof with UV inhibitors
- Static Coefficient of Friction (ASTM D2047) Dry: 0.64, Wet: 0.67
- Optional clear anodized drain pan (actual drain by others, if required)

Finishes:

- Aluminum tread:
 - Mill finish (standard) #405
 - Medium bronze anodized #404
 - Clear anodized #403
 - Black anodized #462
- Aluminum cross supports: Mill finish #405
- Bristle filament carpet insert:
 - Manufacturer's standard colors

Sectioning information:



* Mats over 48 square feet may require sectioning as determined by the factory

Note On Dimensions:

* Pawling requires that exact mat opening dimensions be provided. Factory will fabricate mats 1/4" (6) smaller than exact opening dimensions to allow for proper fit.

* Support leg (used for mats exceeding 60" (1524) front to back)

Pawling Corporation reserves the right to discontinue a design or modify an existing design without prior notice

Customer :	Project :	ED.33.8c
Architect :	Sales Rep :	