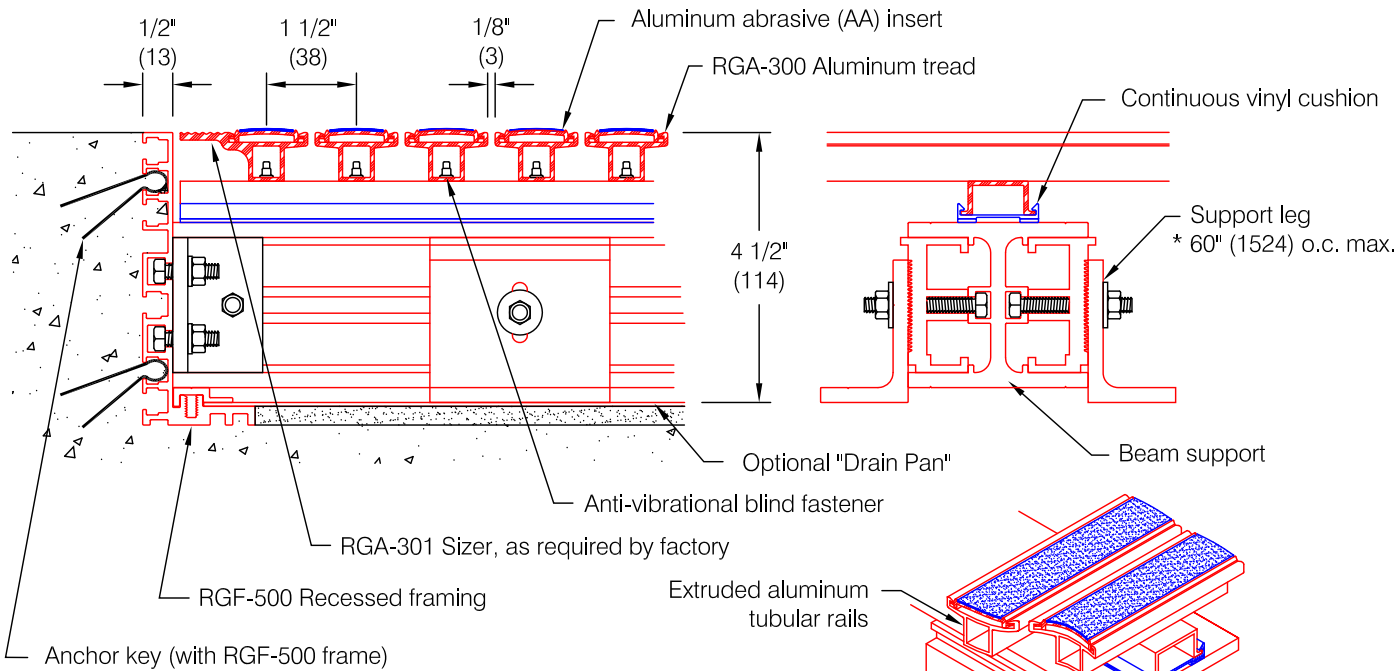


RG-600 Drain-Well[®] Aluminum Abrasive Insert



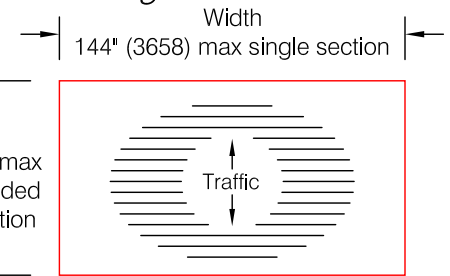
Features:

- Extruded aluminum treads and cross supports alloy 6105-T5
- Continuous dual-durometer vinyl cushion for superior noise reduction
- 4 1/2" (114) deep for increased drainage ability
- Tubular tread rails for increased strength
- Anti-vibrational fasteners for sturdy, long-life service
- Single section width to 144" (3658)
- Aluminum abrasive insert: Extruded aluminum base with applied abrasive strip
- Static Coefficient of Friction (ASTM D-2047-82)
 Dry: > 1.14, Wet: > 1.20
- Optional clear anodized drain pan (actual drain by others, if required)

Finishes:

- Aluminum tread:
 - Mill finish (standard) #405
 - Medium bronze anodized #404
 - Clear anodized #403
 - Black anodized #462
- Aluminum cross supports:
 - Mill finish #405
- Aluminum abrasive insert alloy 6105-T5:
 - Mill finish aluminum base (standard) #405
 - Abrasive from manufacturer's color samples

Sectioning information:



Note On Dimensions:

* Pawling requires that exact mat opening dimensions be provided. Factory will fabricate mats 1/4" (6) smaller than exact opening dimensions to allow for proper fit.

* Support leg (used for mats exceeding 60" (1524) front to back)

Pawling Corporation reserves the right to discontinue a design or modify an existing design without prior notice

* Mats over 48 square feet may require sectioning as determined by the factory

Customer :	Project :	ED.33.11b
Architect :	Sales Rep :	