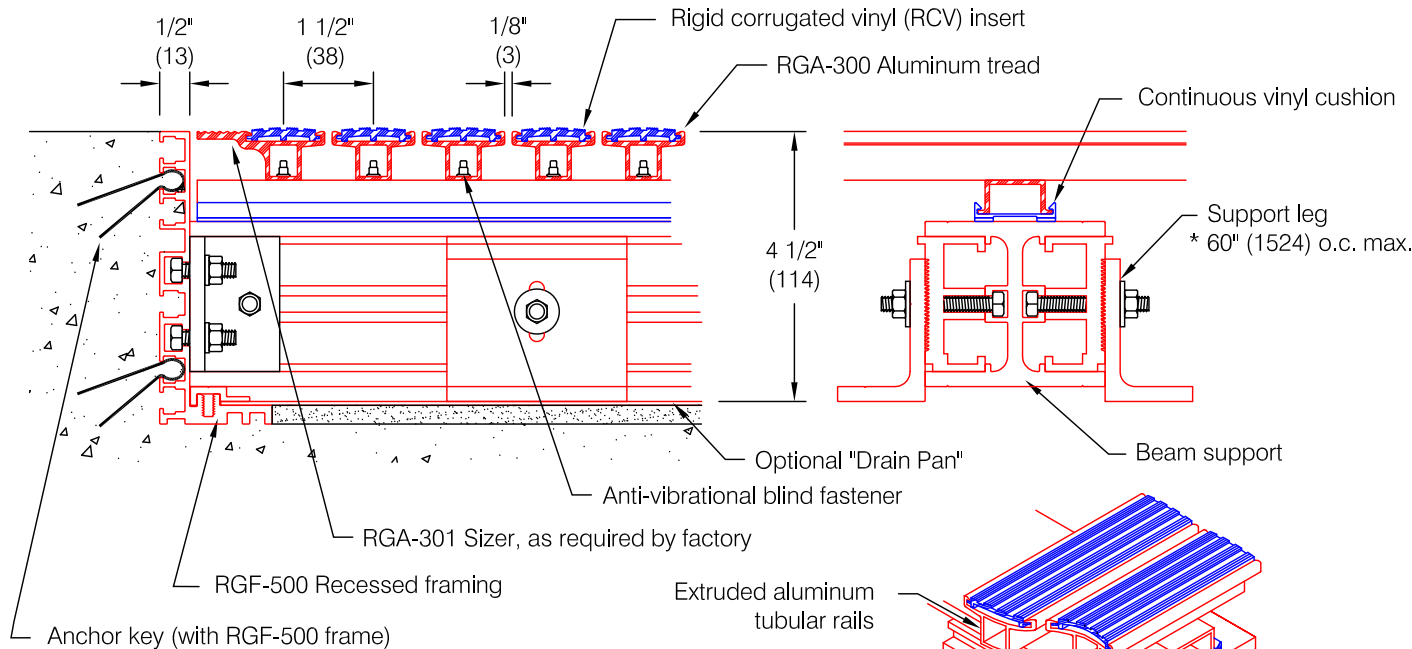


# RG-500 Drain-Well<sup>®</sup> Rigid Corrugated Vinyl Insert



**Features:**

- Extruded aluminum treads and cross supports alloy 6105-T5
- Continuous dual-durometer vinyl cushion for superior noise reduction
- 4 1/2" (114) deep for increased drainage ability
- Tubular tread rails for increased strength
- Anti-vibrational fasteners for sturdy, long-life service
- Single section width to 144" (3658)
- Rigid corrugated vinyl insert (colorable)
- Optional clear anodized drain pan (actual drain by others, if required)

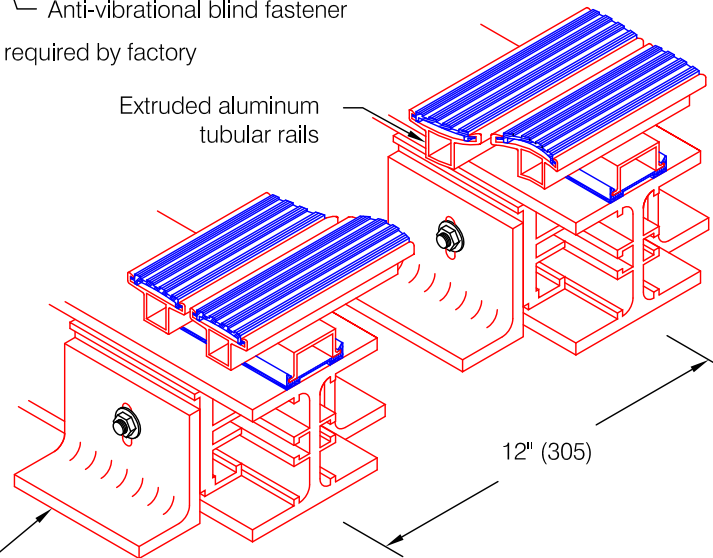
**Finishes:**

- Aluminum tread:
  - Mill finish (standard) #405
  - Medium bronze anodized #404
  - Clear anodized #403
  - Black anodized #462
- Aluminum cross supports:
  - Mill finish #405
- Rigid corrugated vinyl insert (colorable):
  - Select from manufacturer's color samples

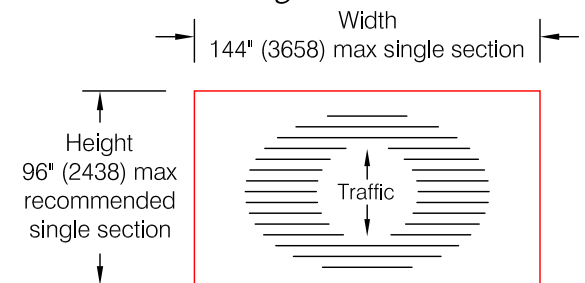
**\* Note On Dimensions:**

**Pawling requires that exact mat opening dimensions be provided. Factory will fabricate mats 1/4" (6) smaller than exact opening dimensions to allow for proper fit.**

\* Support leg (used for mats exceeding 60" (1524) front to back)



**Sectioning information:**



**\* Mats over 48 square feet may require sectioning as determined by the factory**

Pawling Corporation reserves the right to discontinue a design or modify an existing design without prior notice

Customer :	Project :	ED.33.13a
Architect :	Sales Rep :	