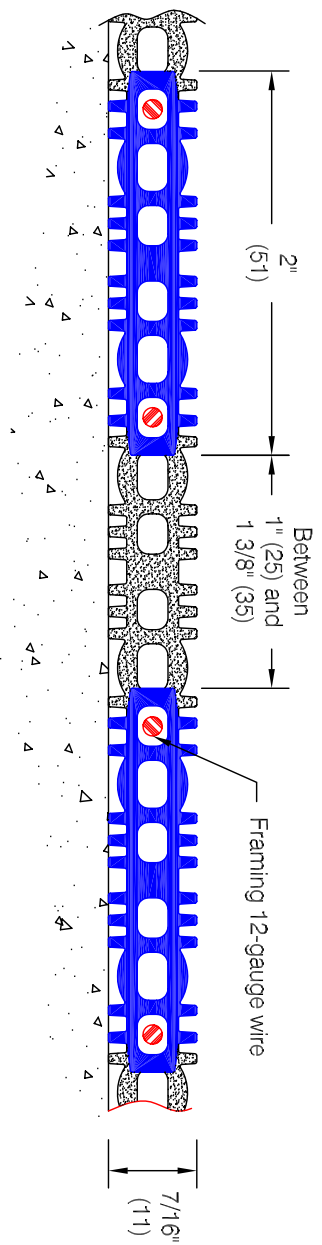




Pro•Tek® Entrance Mats & Gratings
 Architectural Building Products Since 1945

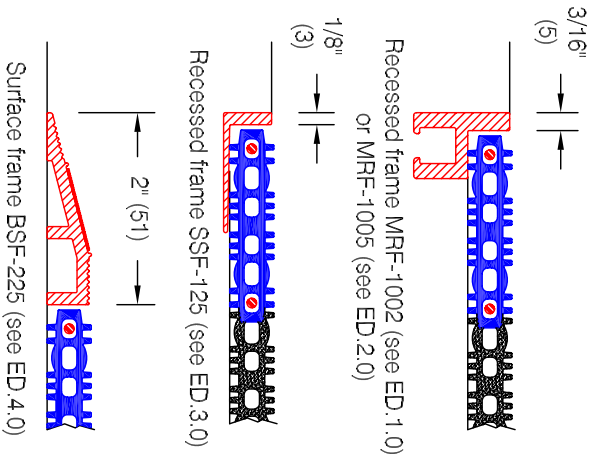
LM-400 Open Weave Parco-Link® Vinyl Mat



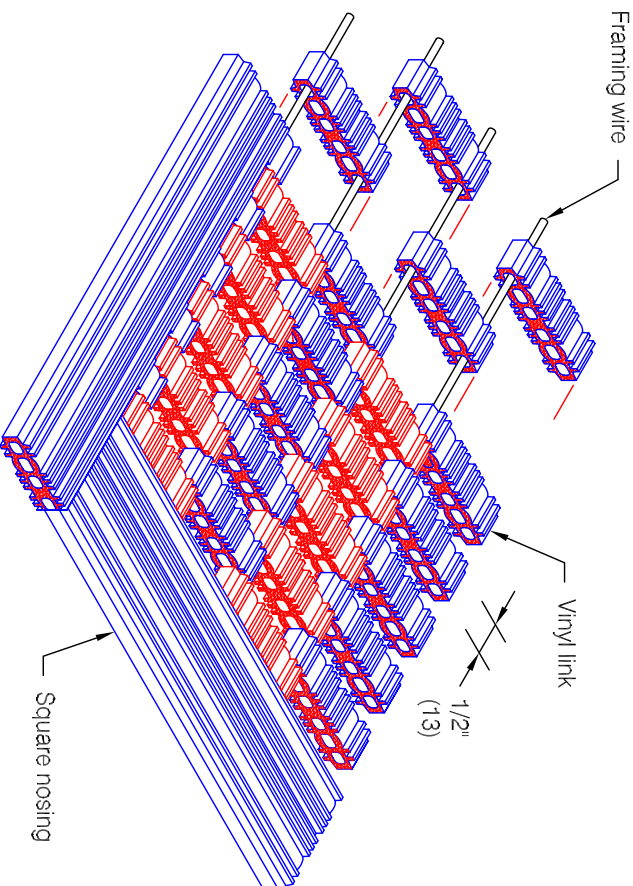
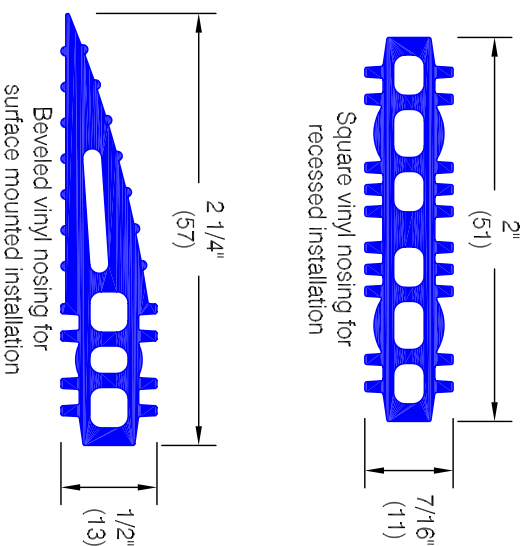
- Features:**
- Flammability: Class 1 (ASTM E-648 and NFPA)
 - Static Coefficient of Friction (ASTM D-2047-82)
Dry: 0.67, Wet: 0.89

- Finishes:**
- Vinyl links
 - Manufacturer's standard colors
 - Custom colors available
 - Framing wire
 - Spring steel or stainless steel

Optional Framing:



Required Nosing:



* Mat shown with square nosing

Pawling Corporation reserves the right to discontinue a design or modify an existing design without prior notice

Customer :	Project :	ED.43.0b
Architect :	Sales Rep :	