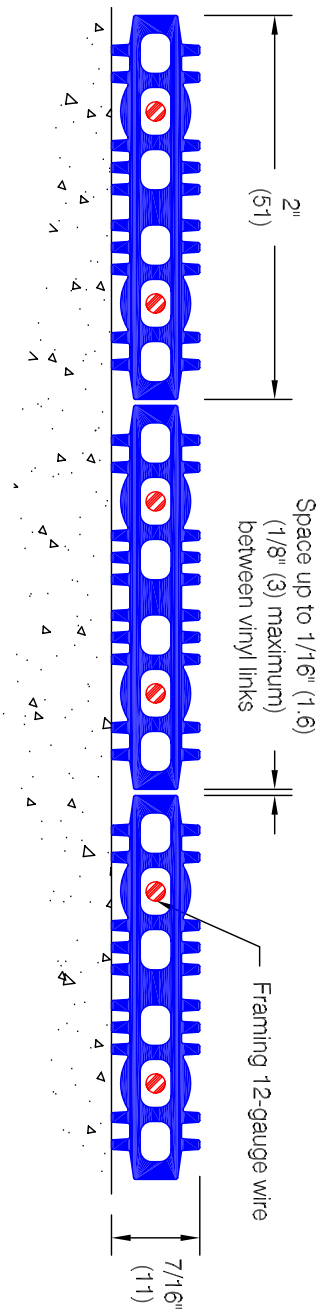




Pro•Tek® Entrance Mats & Gratings
 Architectural Building Products Since 1945

LM-100 Closed Weave Parco-Link® Vinyl Mat



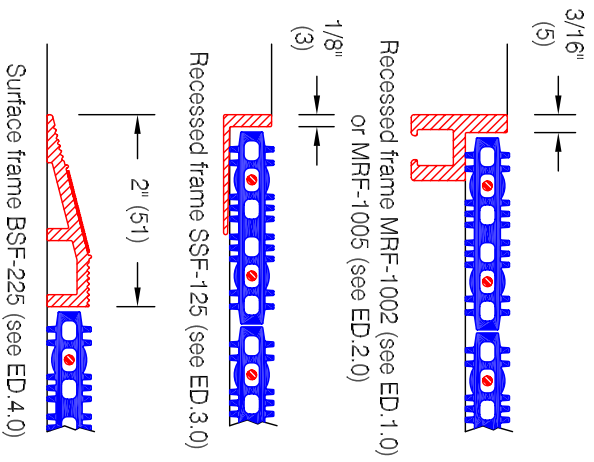
Features:

- Mats available with standard mosaic logos or special split-link non-mosaic logos
- Flammability: Class 1 (ASTM E-648 and NFPA)
- Static Coefficient of Friction (ASTM D-2047-82) Dry: 0.67, Wet: 0.89

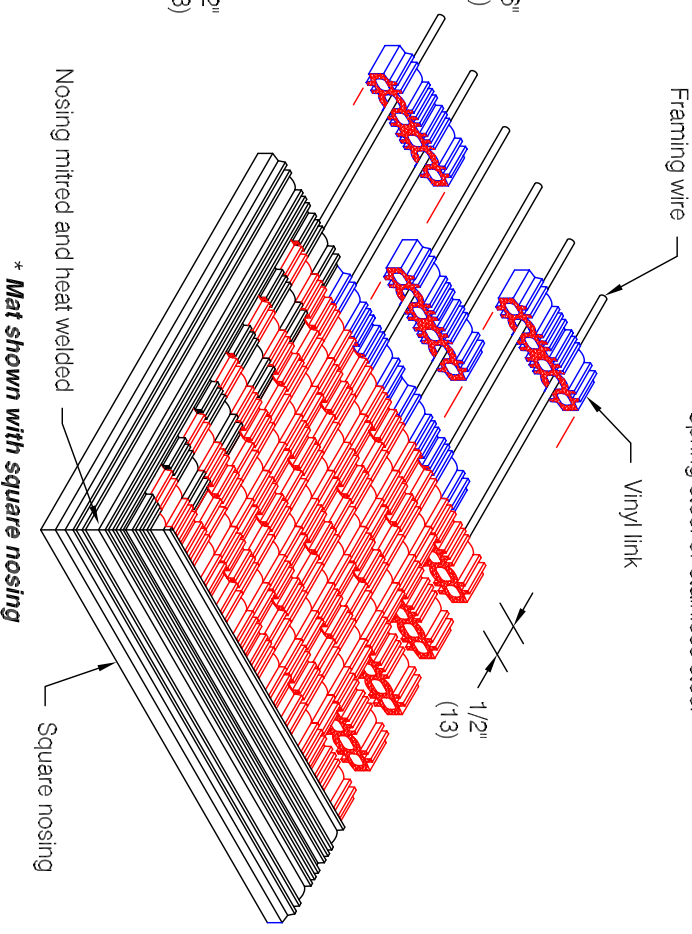
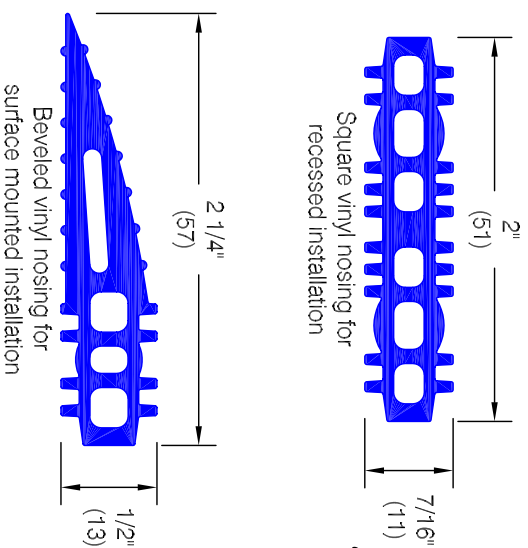
Finishes:

- Vinyl links
 Manufacturer's standard colors
 Custom colors available
- Framing wire
 Spring steel or stainless steel

Optional Framing:



Required Nosing:



Pawling Corporation reserves the right to discontinue a design or modify an existing design without prior notice

Customer :
 Architect :

Project :
 Sales Rep :

ED.42.0C