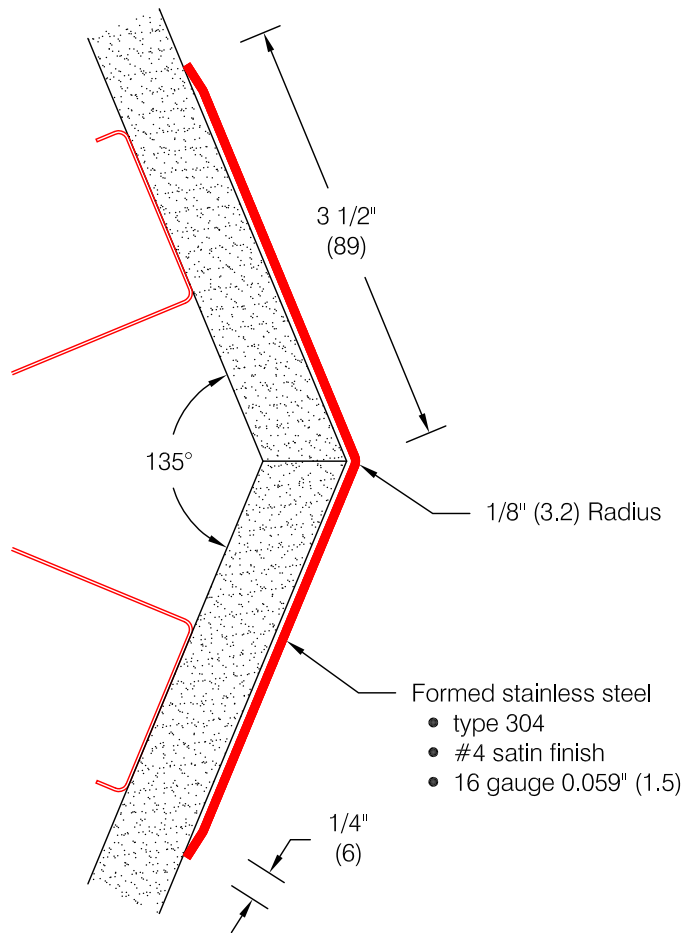


CG-60 Stainless Corner Guard



Features:

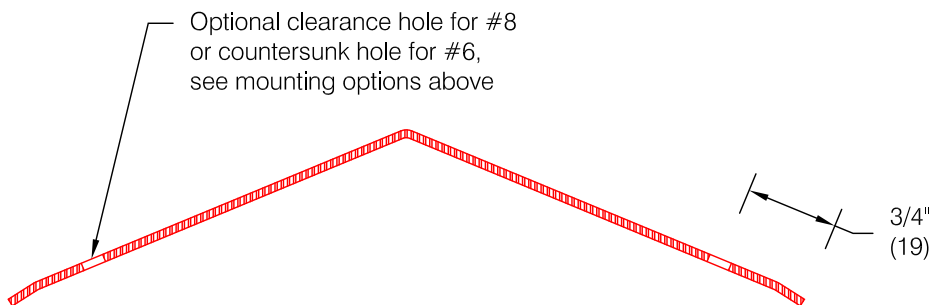
- Custom lengths, angles, and wing sizes are available
- Available for 90° corners (see WD.121.0)
- Available with 3/4" (19) radius (see WD.126.0)
- Type 304 stainless
- Stock lengths: 4'-0" (1219) & 8'-0" (2438)

Mounting Options:

- Standard mounting
Adhesive:
ADH-50 adhesive supplied separately

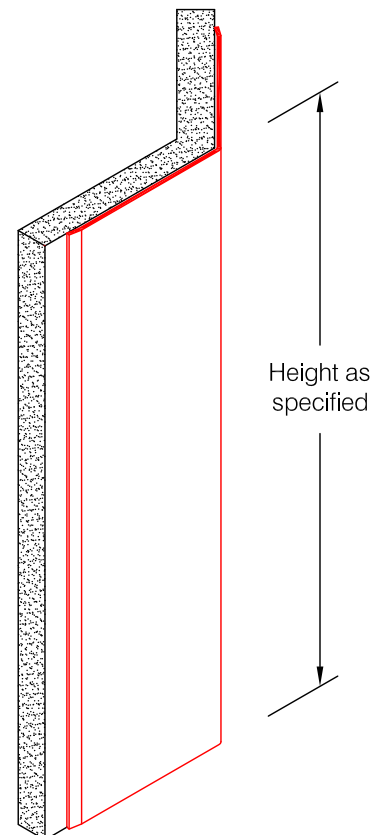
- Optional mounting
Standard Drilling:
Clearance holes for #8 fastener.
ABSS-113, #8 x 1 1/2" (38) oval head sheet metal screw and ABCW-132 stainless cup washer supplied separately as required.

- Countersunk Drilling:
Countersunk holes for #6 fastener.
ABSS-134, #6 x 1 1/2" (38) oval head sheet metal screw supplied separately as required.



Spacing for optional drilling:

- Standard spacing: 3" (76) from each end and spaced evenly not to exceed 36" (914) oc



Pawling Corporation reserves the right to discontinue a design or modify an existing design without prior notice

Customer :	Project :	WD.125.0b
Architect :	Sales Rep :	