

SC-3 Laminated Rubber Wheel Chock

Features:

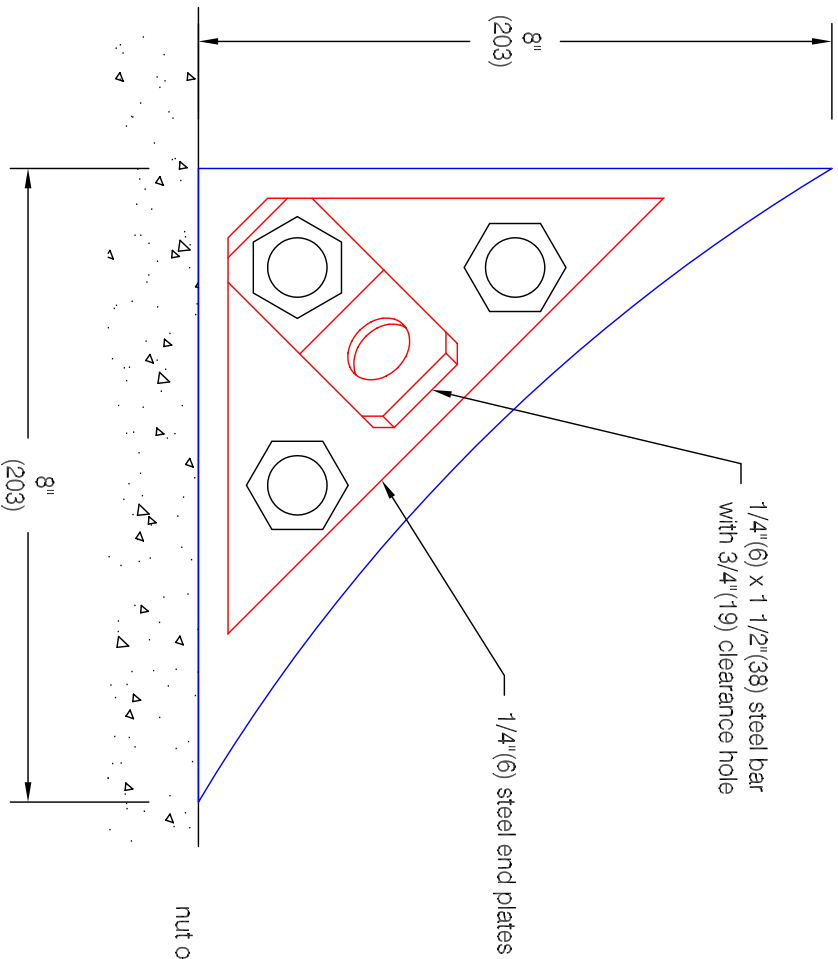
- Laminated recycled tire rubber pads
- Weight: 14 lbs

Applications:

- Suitable for lightweight vehicles

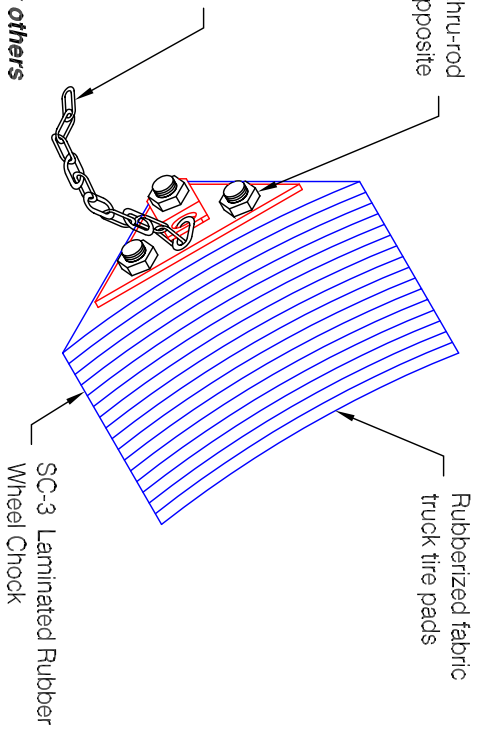
Finishes (metal components):

- Chrome aluminum lead-free enamel #107



- Optional Chain:** (specify length)
- CH-1 weldless, double loop coil, zinc-coated steel, #3/0
 - CH-2 welded, zinc-plated steel, 3/16" (5) dia.

* Anchoring hardware supplied by others



Pawling Corporation reserves the right to discontinue a design or modify an existing design without prior notice

Customer :

Architect :

Project :

Sales Rep :

PD.14.0a