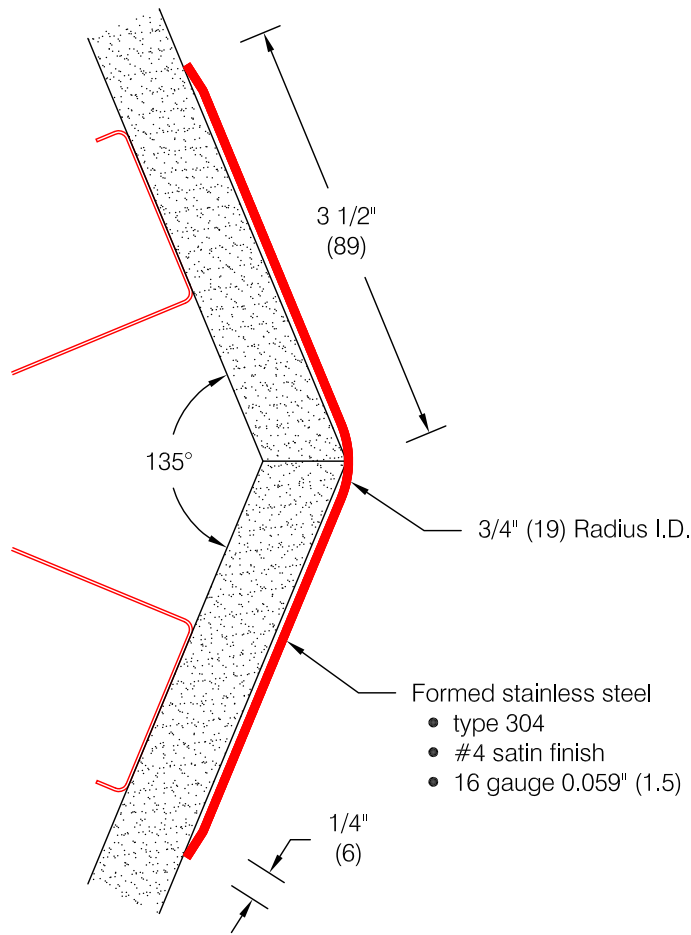


CG-65 Stainless Corner Guard



Features:

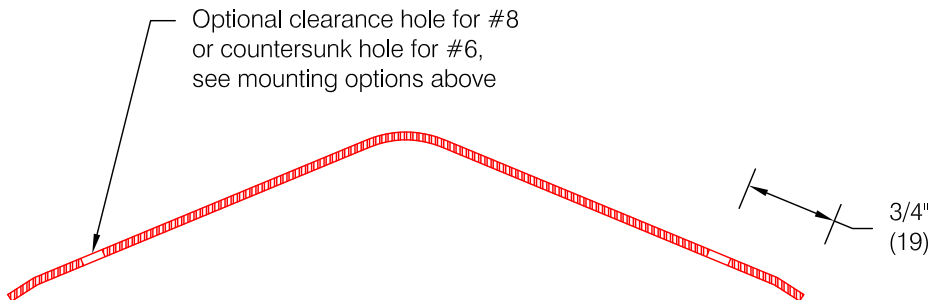
- Custom lengths, angles, and wing sizes are available
- Available for 90° corners (see WD.124.0)
- Available with 1/8" (3.2) radius (see WD.125.0)
- Type 304 stainless available
- Stock lengths: 4'-0" (1219) & 8'-0" (2438)

Mounting Options:

- Standard mounting
Adhesive:
ADH-50 adhesive supplied separately

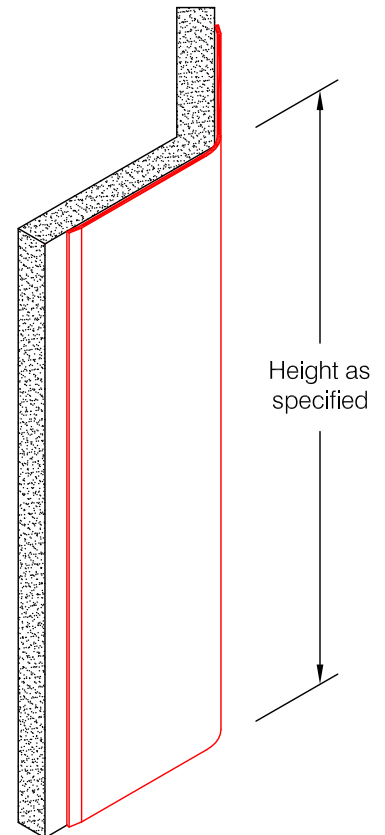
- Optional mounting
Standard Drilling:
Clearance holes for #8 fastener. ABSS-113, #8 x 1 1/2" (38) oval head sheet metal screw and ABCW-132 stainless cup washer supplied separately as required.

- Countersunk Drilling:
Countersunk holes for #6 fastener. ABSS-134, #6 x 1 1/2" (38) oval head sheet metal screw supplied separately as required.



Spacing for optional drilling:

- Standard spacing: 3" (76) from each end and spaced evenly not to exceed 36" (914) oc



Pawling Corporation reserves the right to discontinue a design or modify an existing design without prior notice

| | | |
|-------------|-------------|-----------|
| Customer : | Project : | WD.126.0b |
| Architect : | Sales Rep : | |