

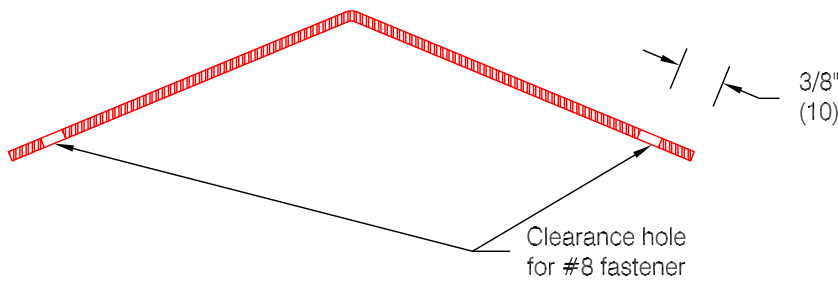
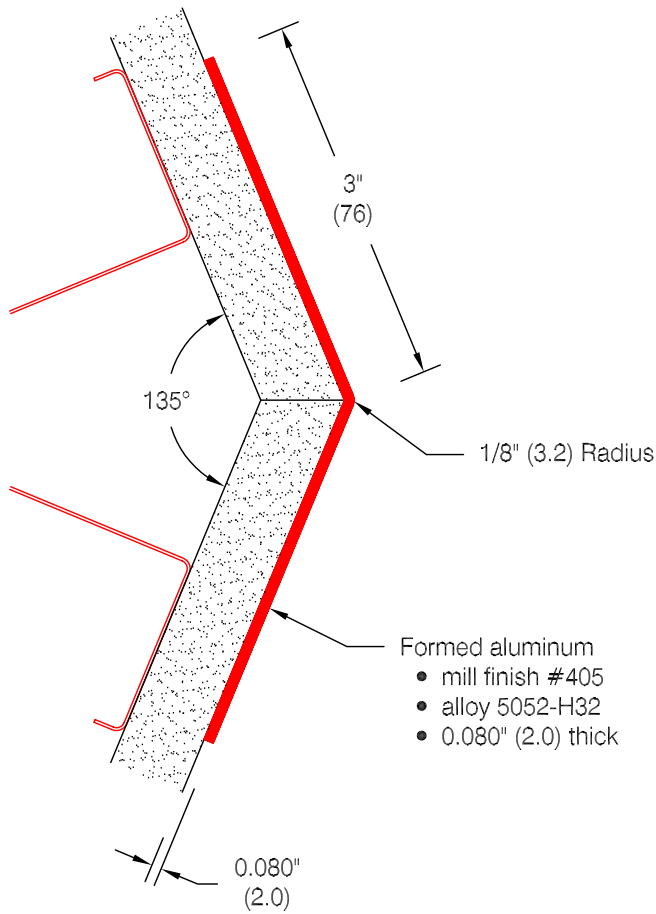
# CG-405 Aluminum Corner Guard

## Features:

- Custom lengths, angles, and wing sizes are available
- Available for 90° corners (see WD.129.0)
- Stock lengths: 4'-0" (1219) & 8'-0" (2438)

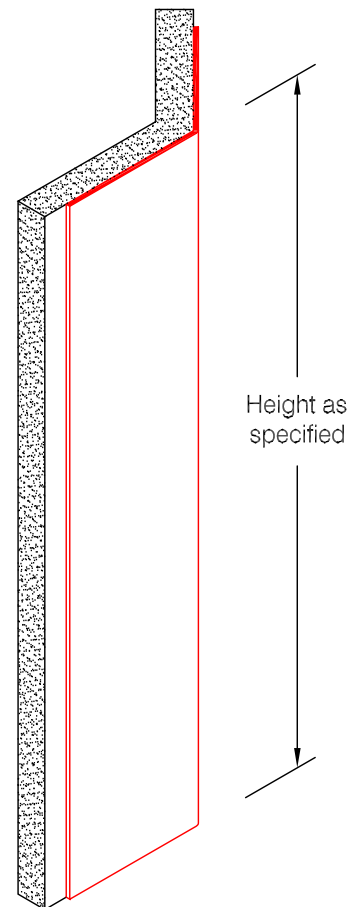
## Mounting Options:

- Standard mounting  
 Adhesive:  
 ADH-50 adhesive supplied separately
- Optional mounting  
 Drilled:  
 Clearance holes for #8 fastener  
 ABSS-113 #8 x 1 1/2" (38) oval head sheet metal screw and ABCW-132 stainless cup washer supplied separately as required



## Optional Drilling:

- Standard spacing: 3" (76) from each end and spaced evenly not to exceed 36" (914) oc



Pawling Corporation reserves the right to discontinue a design or modify an existing design without prior notice

Customer :	Project :	WD.132.0a
Architect :	Sales Rep :	